



UniSA

# **The Impact of Institutional Age on World University Ranking Systems**

**Professor Caroline McMillen  
Deputy Vice Chancellor: Research and Innovation  
University of South Australia**



# World University Ranking Systems: Age and Reputation

**UK leaps to global success**

**European universities  
scrape by with a pass mark**

**Determined challengers keep  
heat on the elite**

**League tables 2010: Who hits lofty heights?**

**The Rankings Game**

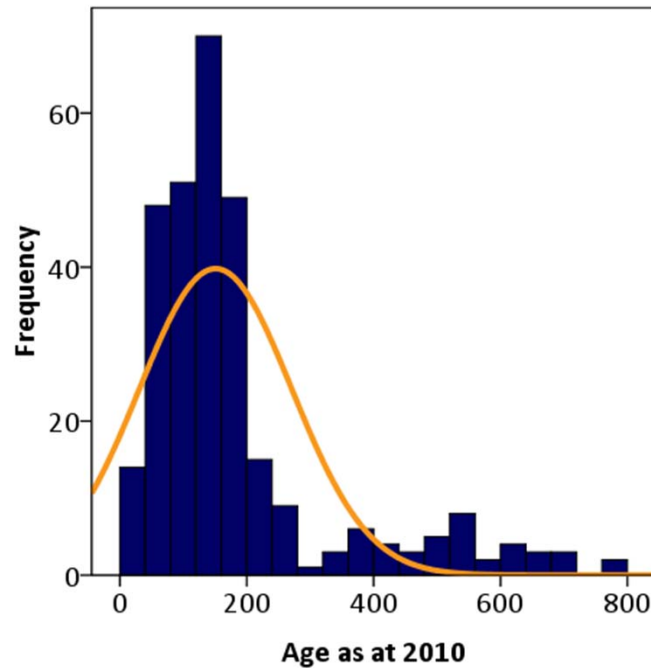
**Small Change Leads to Rankings Controversy**

**Where are you placed in the World University Ranking?**

## World University Ranking Systems: Impact of Institutional Age

- **Universities < 50 years old fall ‘below the radar’ of current world university ranking systems**
- **In order to build research capacity in nations with relatively young universities, it is necessary to build a ranking system which can identify universities which are *on track* to build research intensity i.e. the top 300 ‘*next generation research intensives*’**
- **There is therefore a need to develop benchmark indicators for institutions that measure the trajectory from ‘*research active*’ to ‘*research intensive*’.**

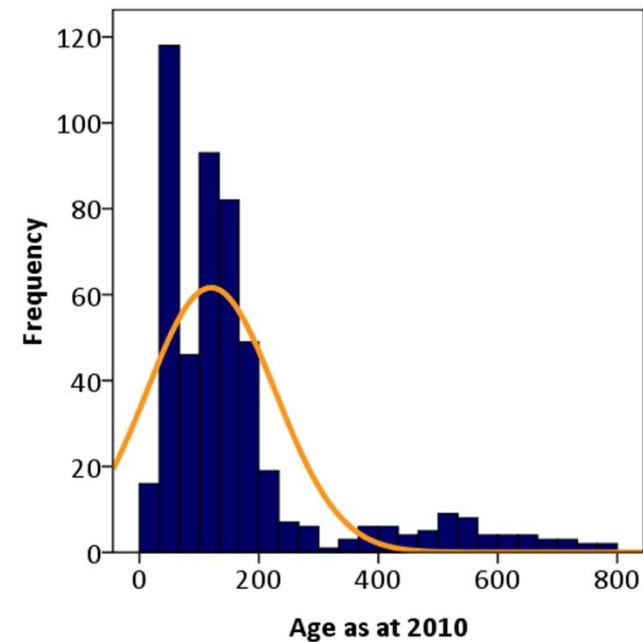




### **SJTU Top 300**

**Median age = 141 yrs**

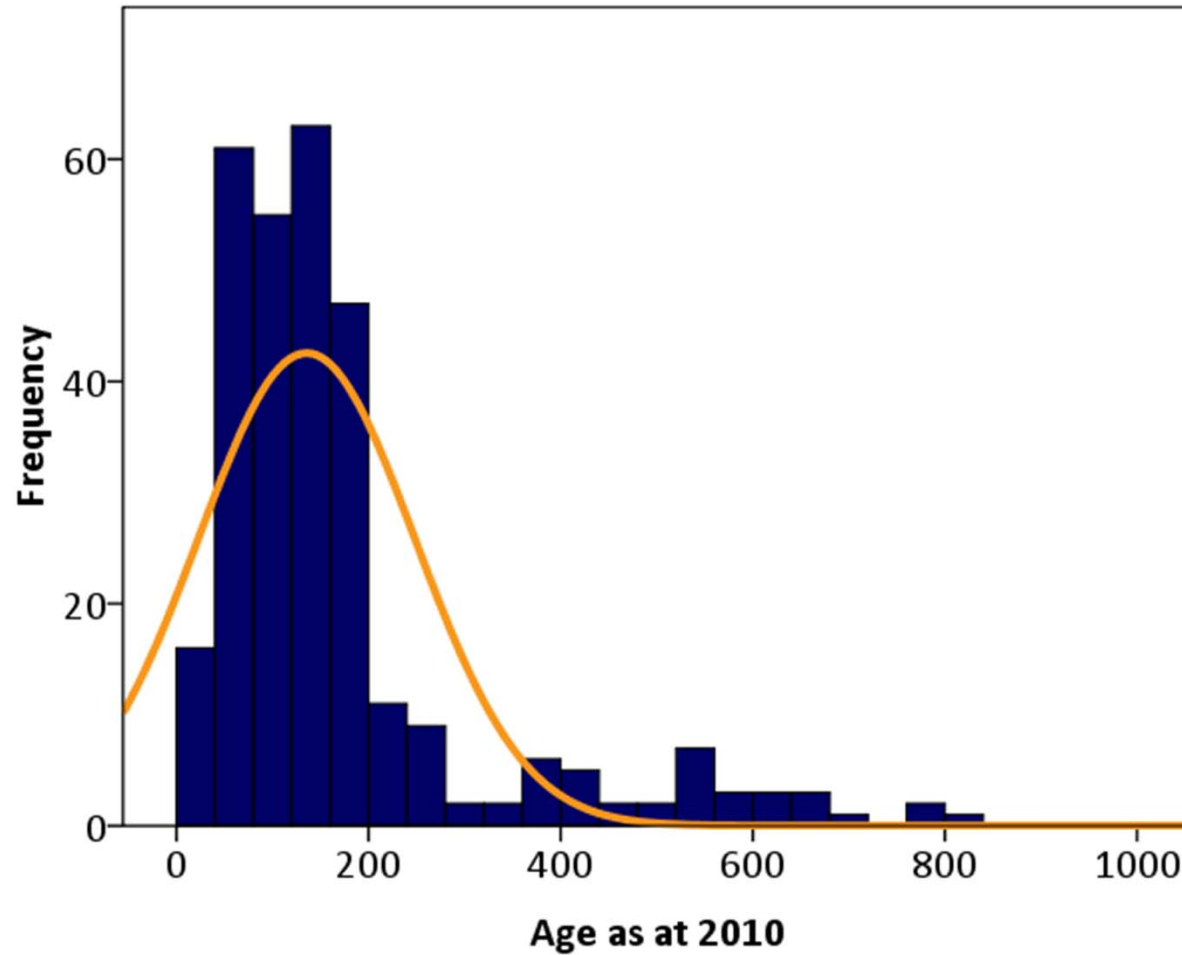
**Mean age = 183 yrs**



### **SJTU Top 500**

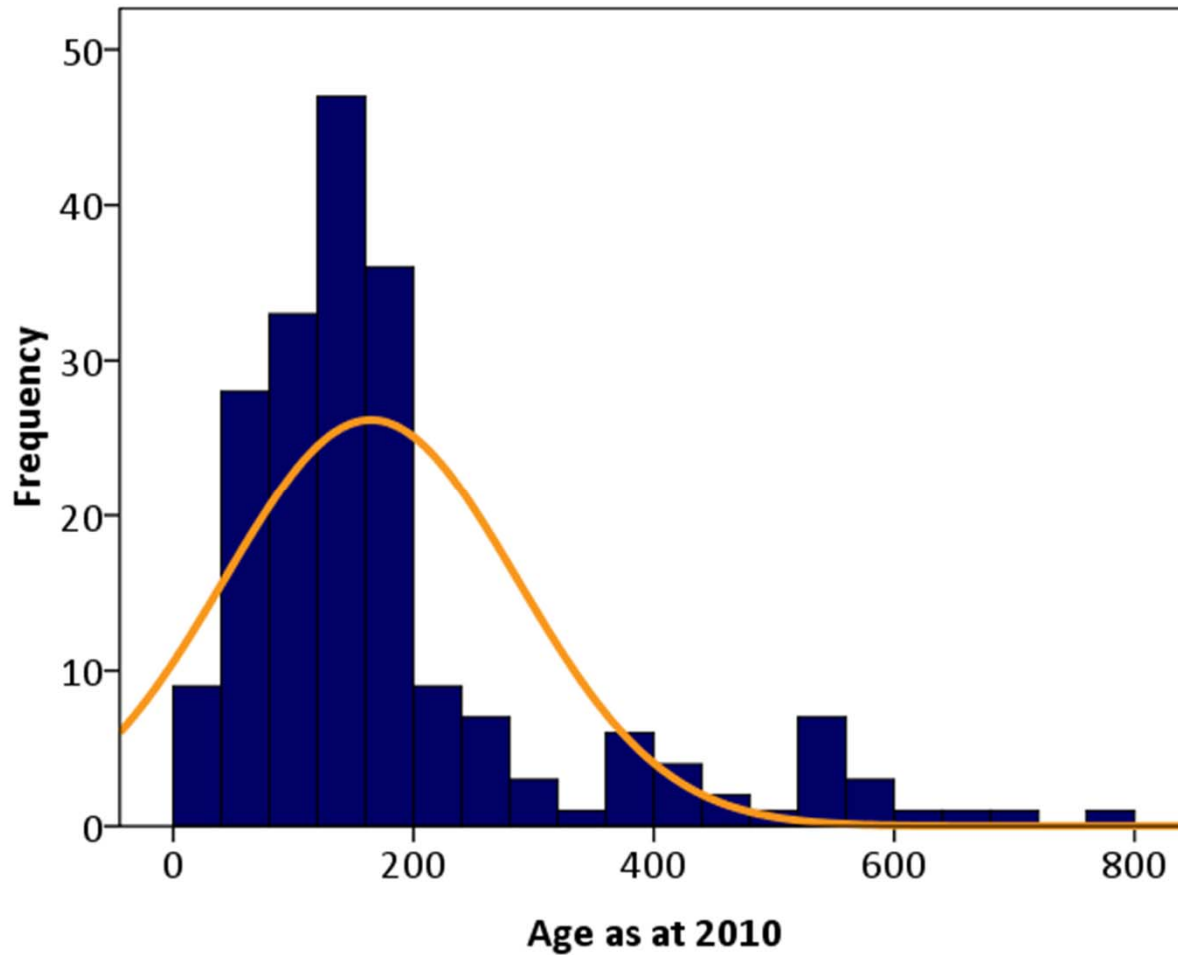
**Median age = 124 yrs**

**Mean age = 167 yrs**



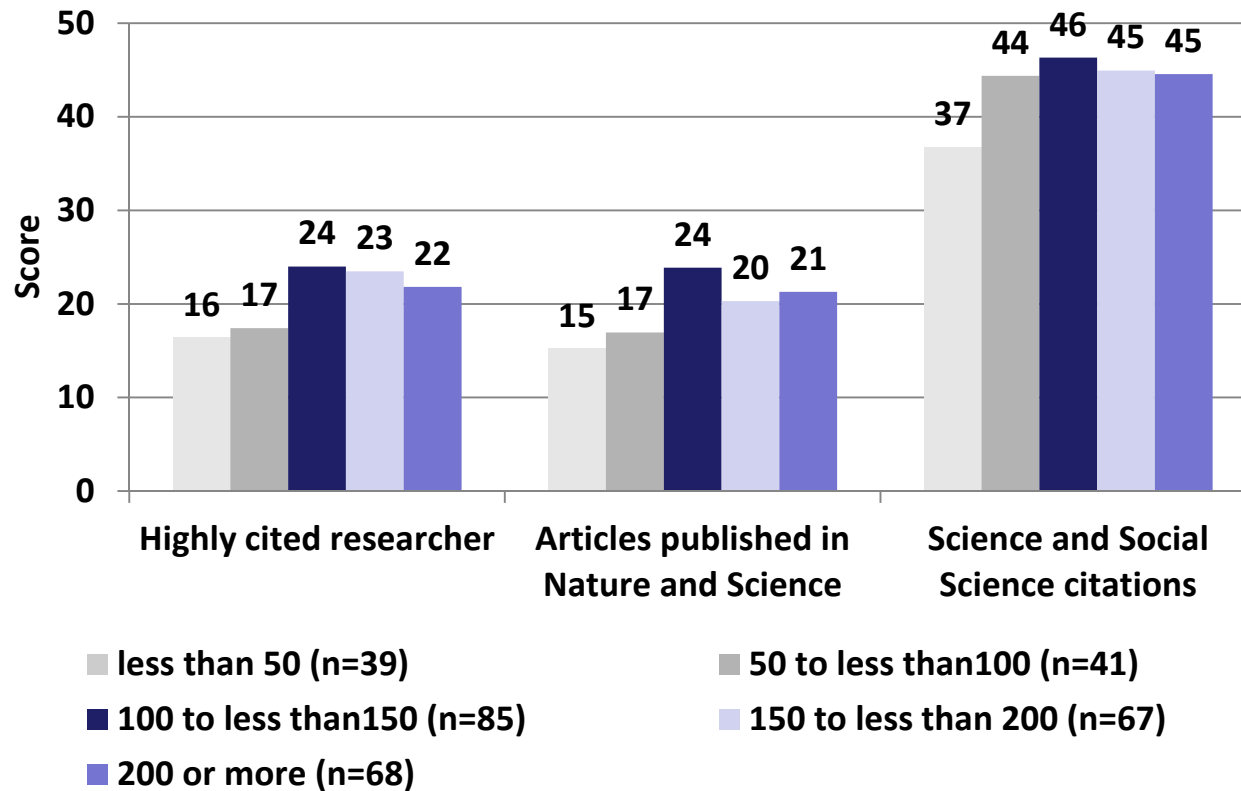
**Median age = 132 yrs**  
**Mean age = 170 yrs**

# 2010 THES Top 200 Impact of Institutional Age

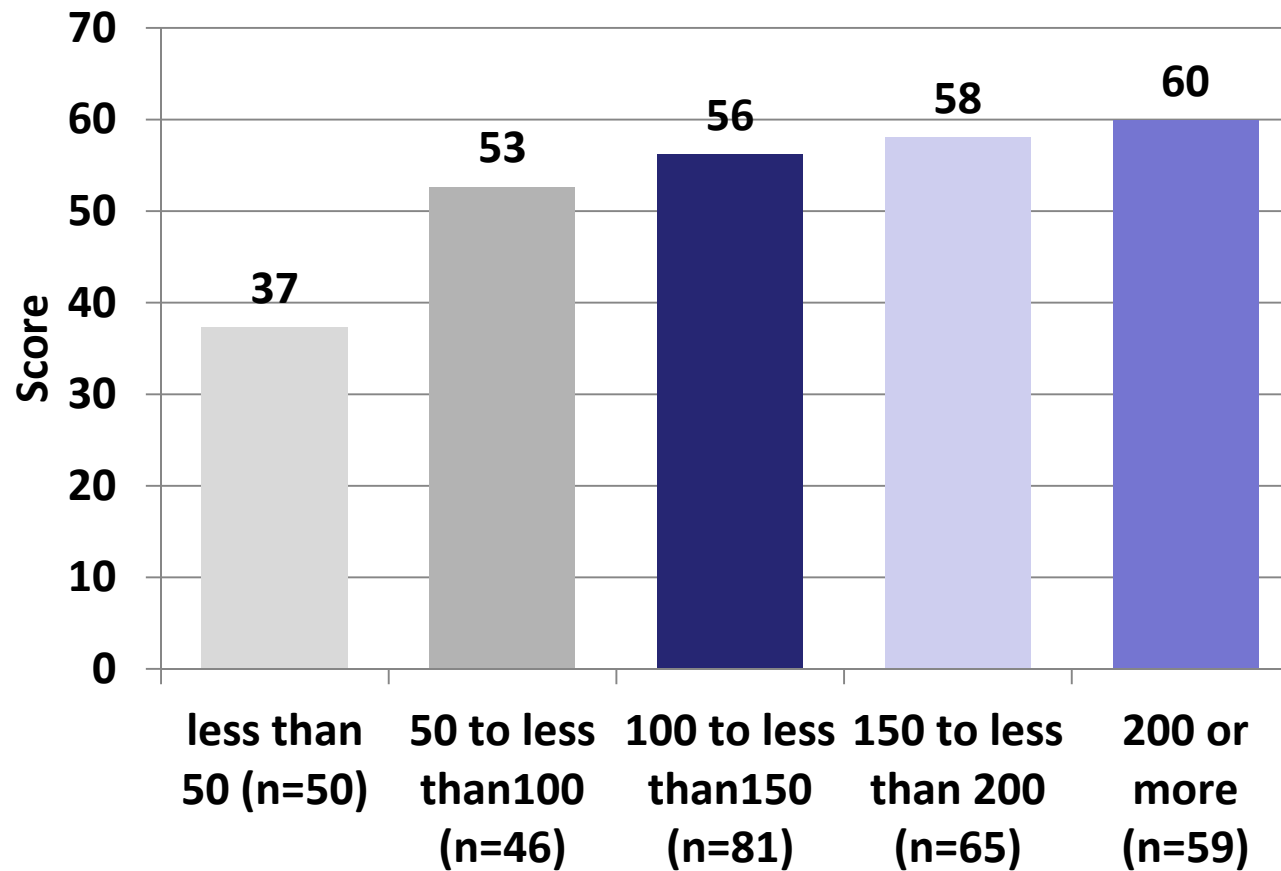


**Median age = 146 yrs**  
**Mean age = 184 yrs**

# 2010 SJTU average scores by age for citation indicators (all institutions n=300)

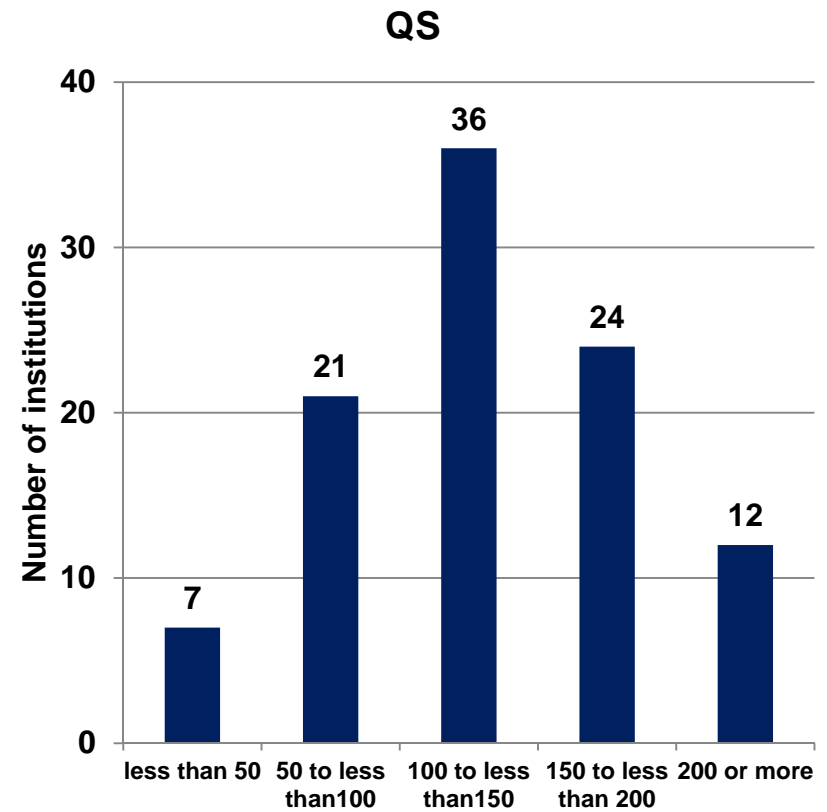
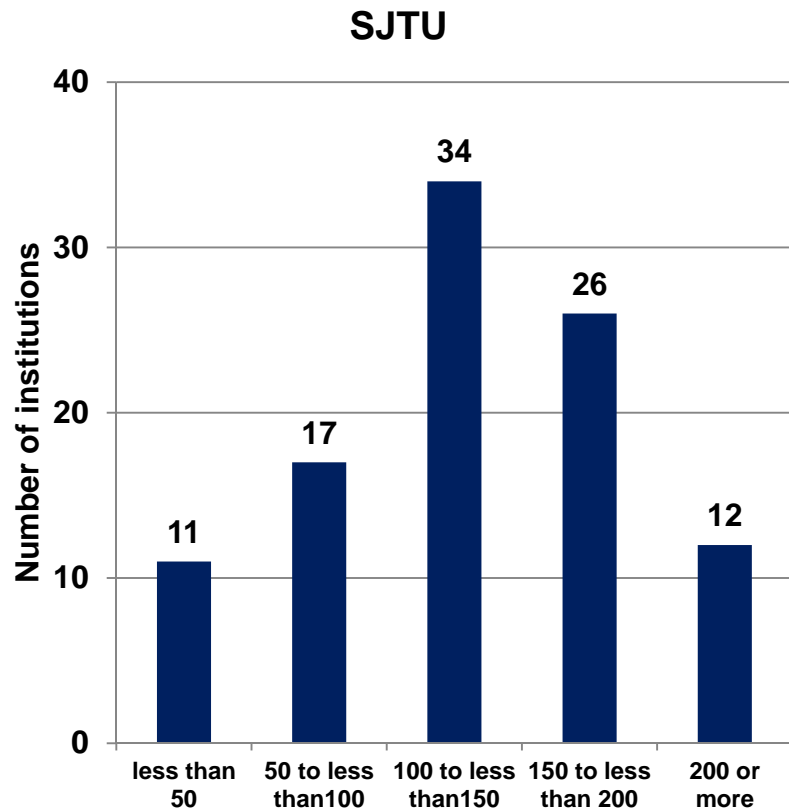


# 2010 QS Citations per Faculty member



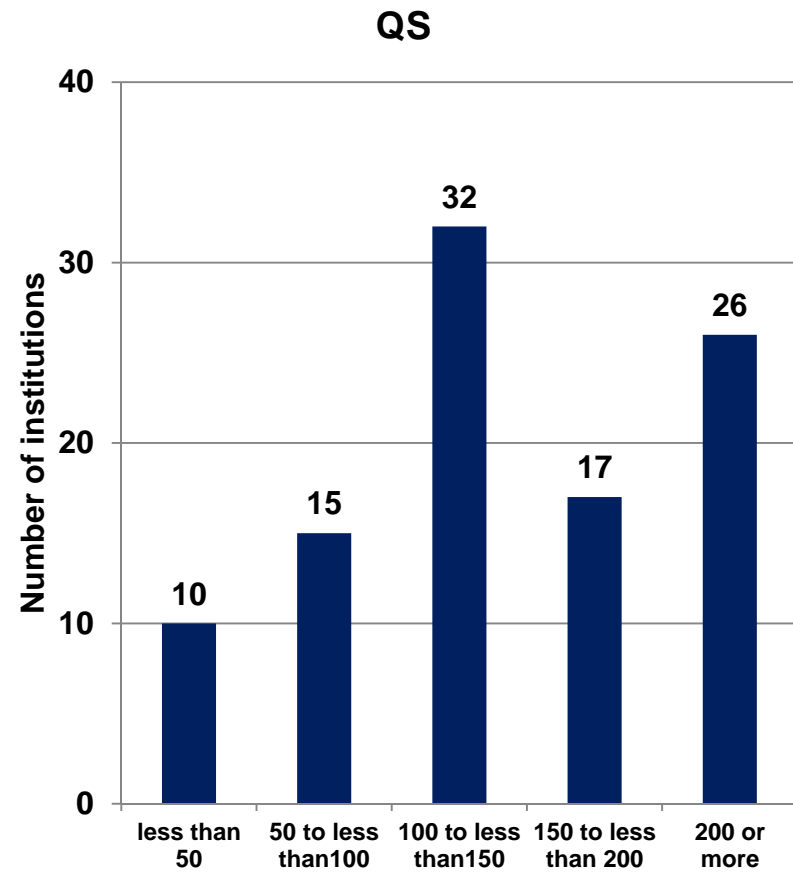
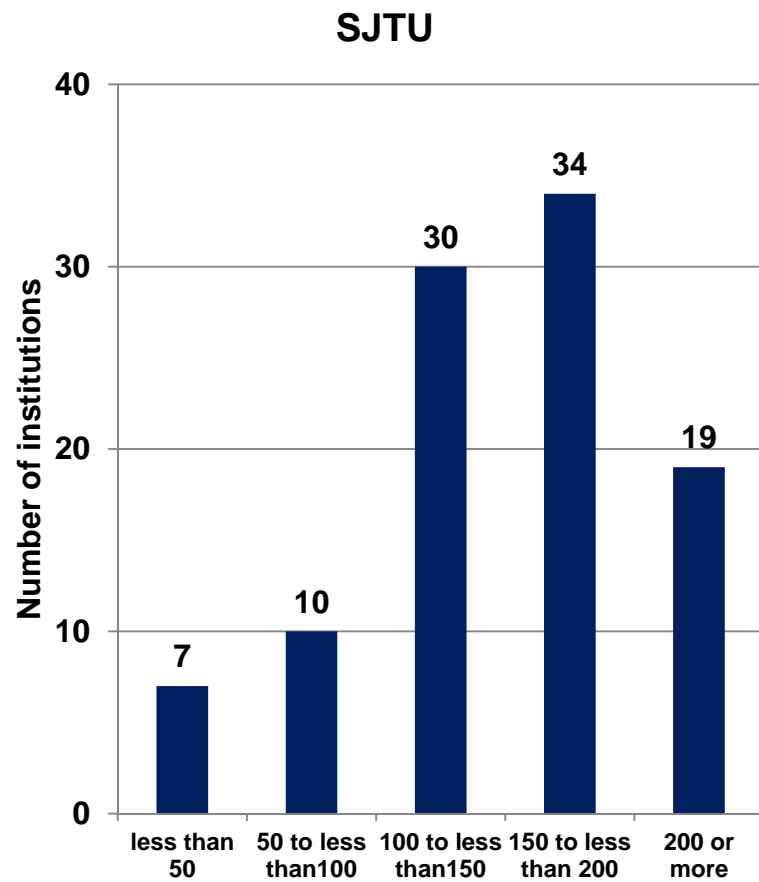


# SJTU and QS Engineering Top 100 Rankings by Institutional Age

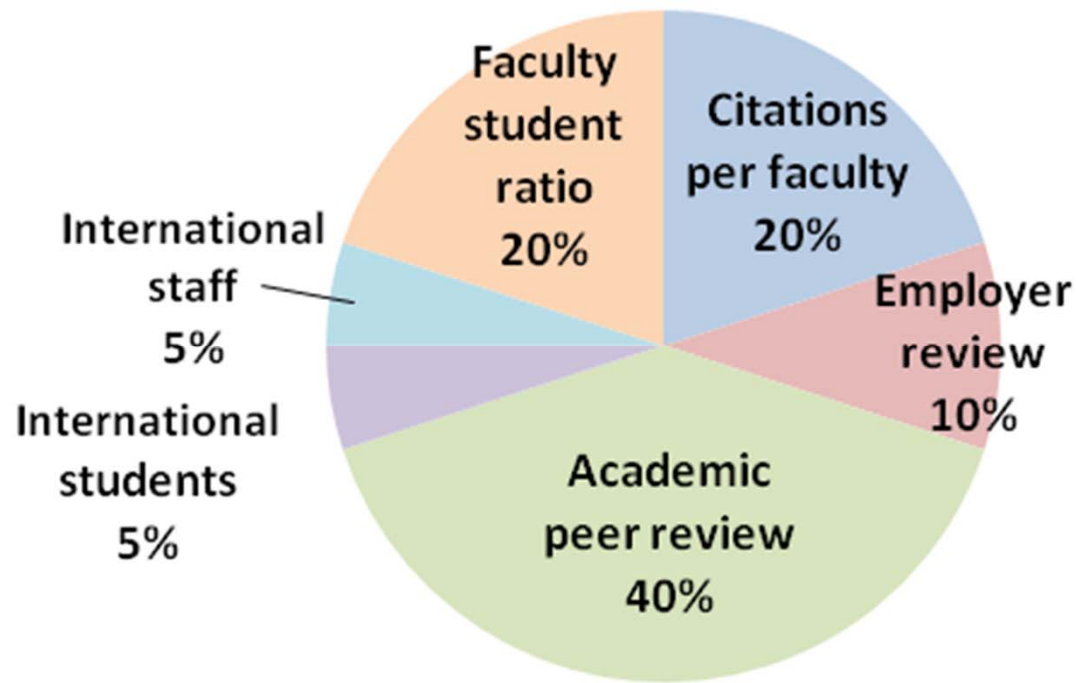




# SJTU and QS Social Science Top 100 Rankings By Institutional Age



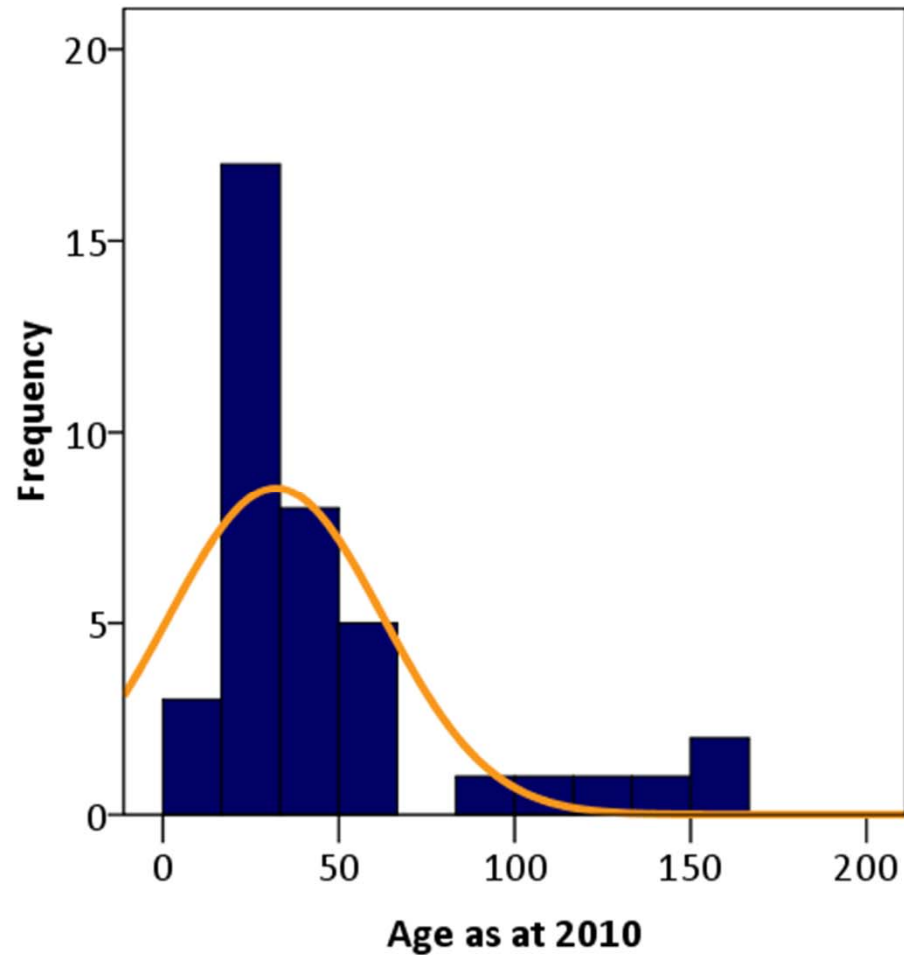
# Impact of Institutional Age on Non Research Indicators



## Age Effect: Across 2010 QS Top 300

Top 300	median age	mean age
Academic Peer Review	130	173
Employer Review	125	152
Faculty Student Ratio	127	158
Citations Per Faculty	134	180
International Staff	125	160
International Students	131	169

# In Australia.... Age of Australian Universities 2010



**Median age = 24 yrs**  
**Mean age = 46 yrs**



# The ATN Young Research Institutions

	Age in 2011 (yrs)
➤ Curtin University	25
➤ University of Technology Sydney	23
➤ Queensland University of Technology	22
➤ University of South Australia	20
➤ Royal Melbourne Institute of Technology	19

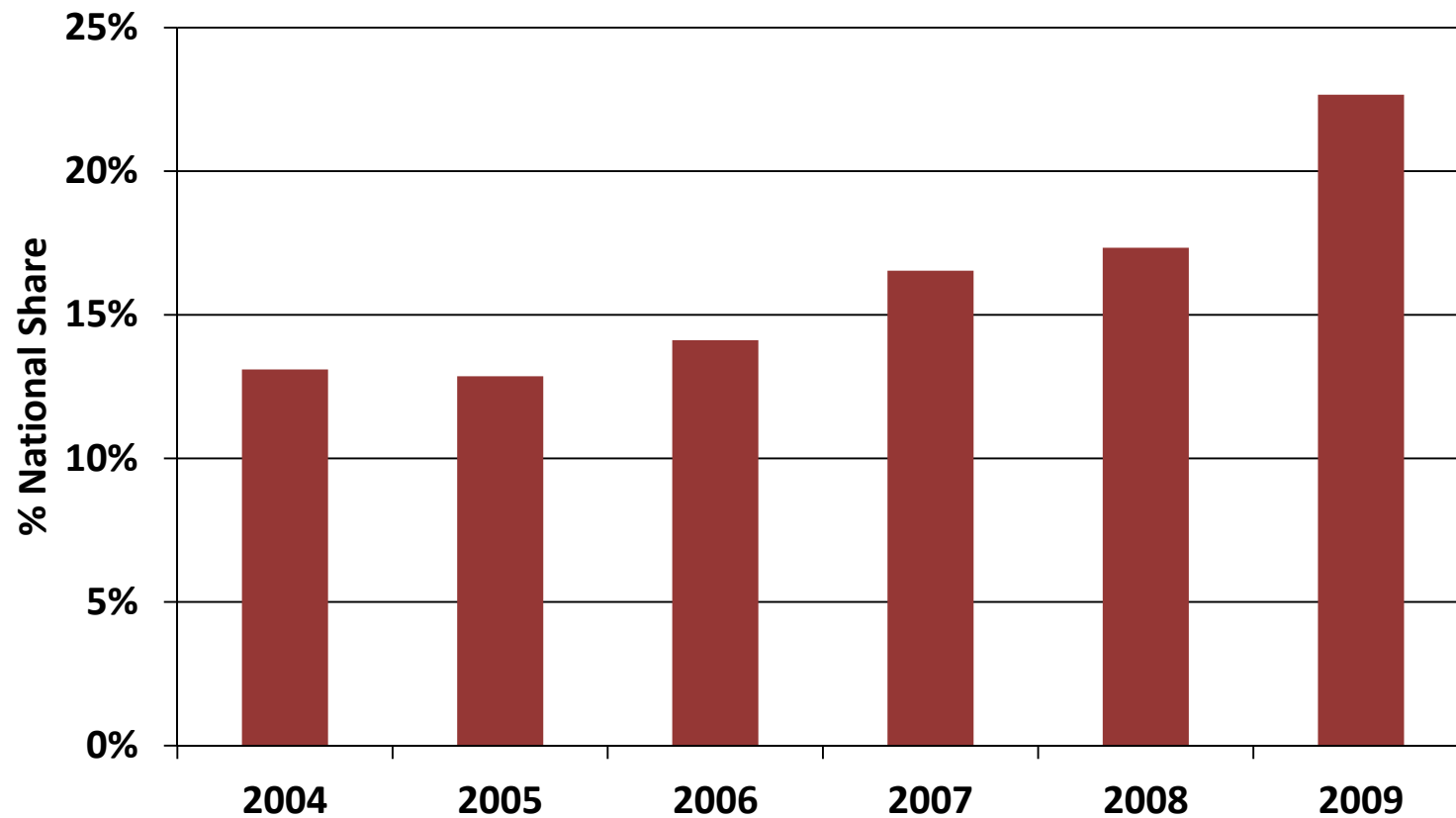




# ATN University-Industry Partnerships

## National Share of Cooperative Research Centre Income

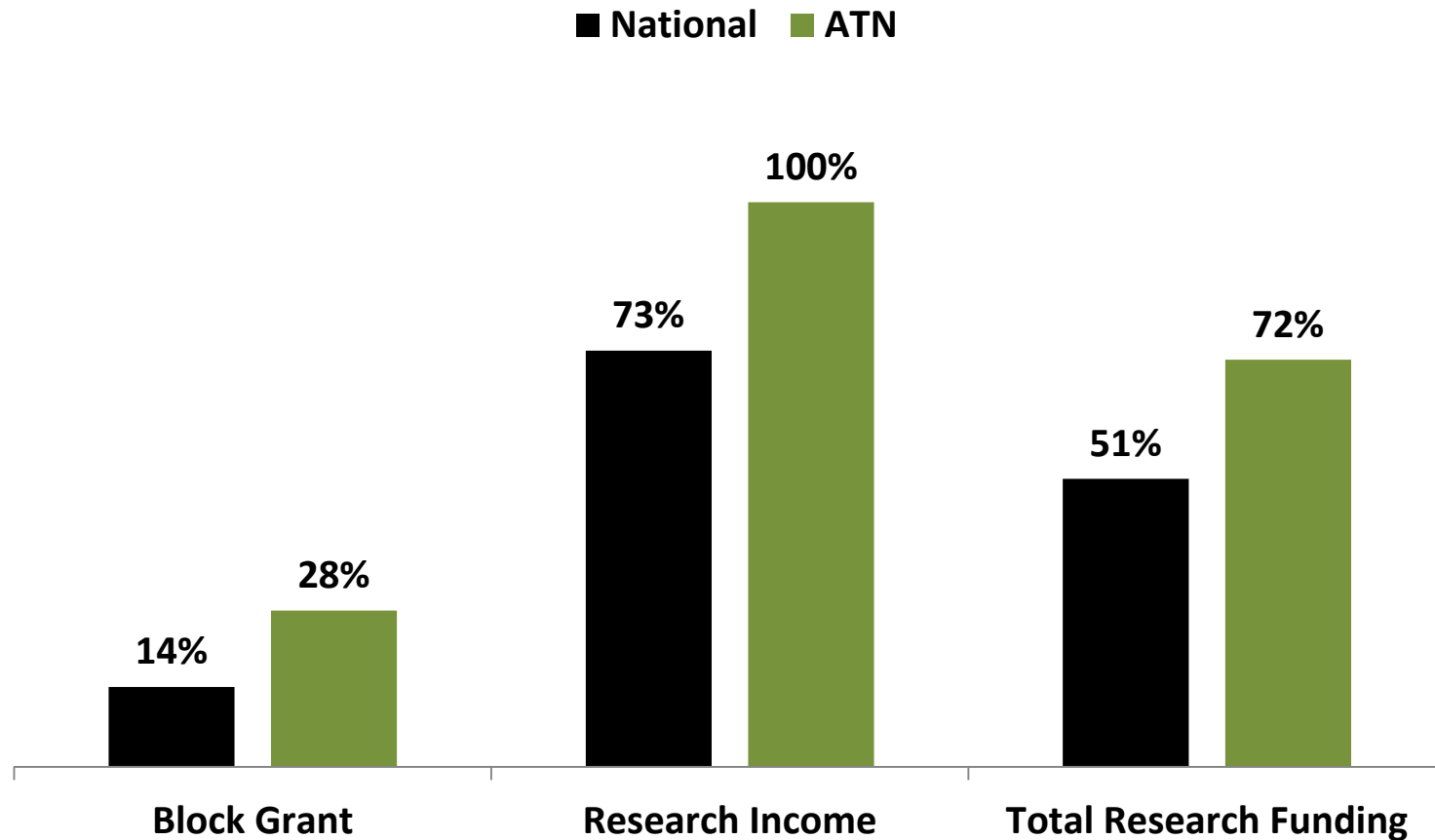
### 2004-2009





# ATN : The Market Challengers

## ATN vs National Growth Rate in Research Income 2004 - 2009



## Mapping The Trajectory from Research 'Active' to 'Intensive'

### ➤ **Research Publications**

Research active:	Volume of outputs/FTE
Research quality:	Journal outputs/FTE

### ➤ **Research Income**

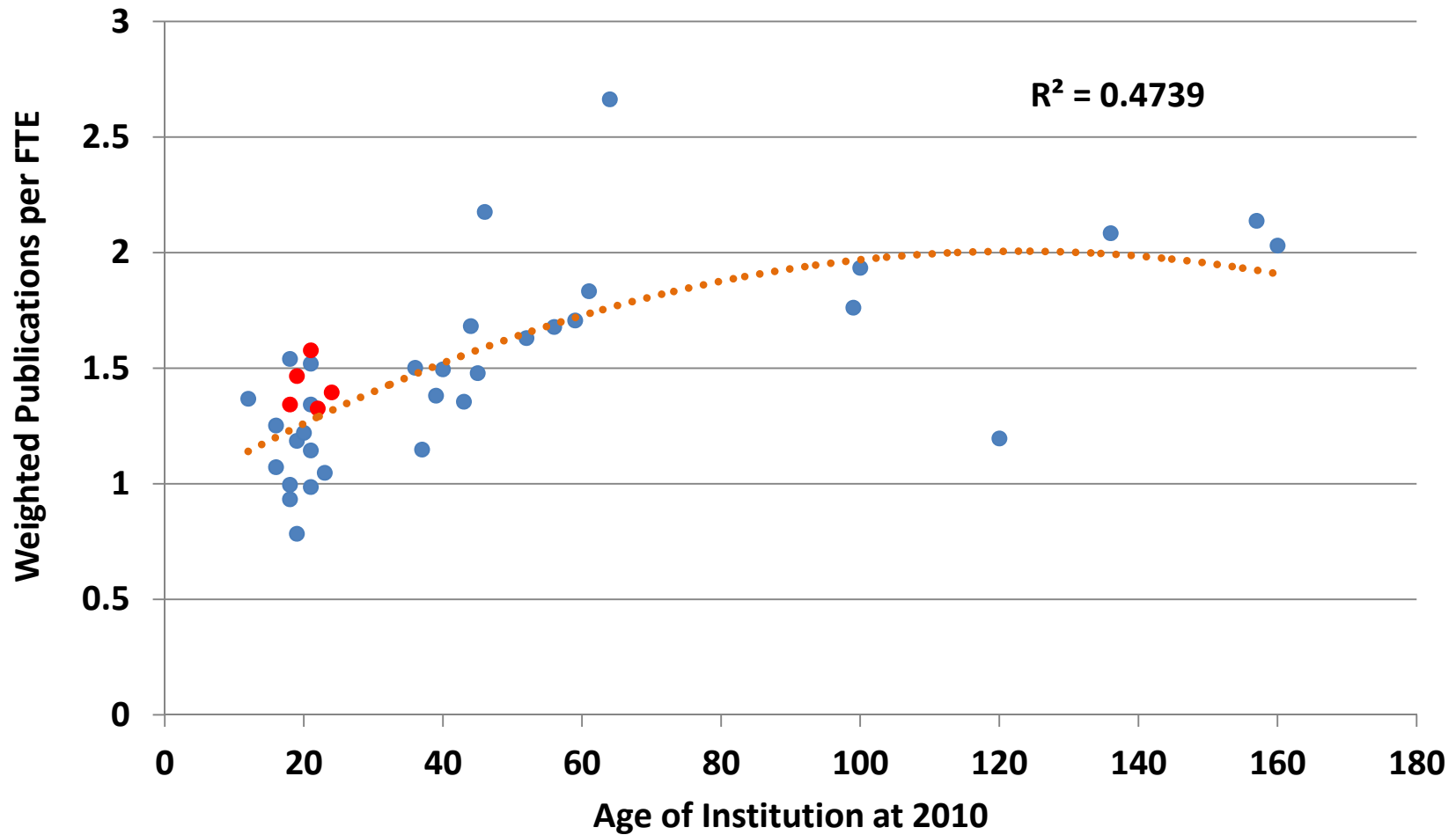
Research active:	Total income/FTE
Research quality:	Competitive grants/FTE

### ➤ **Total Number of Disciplinary Areas performing at world class levels**



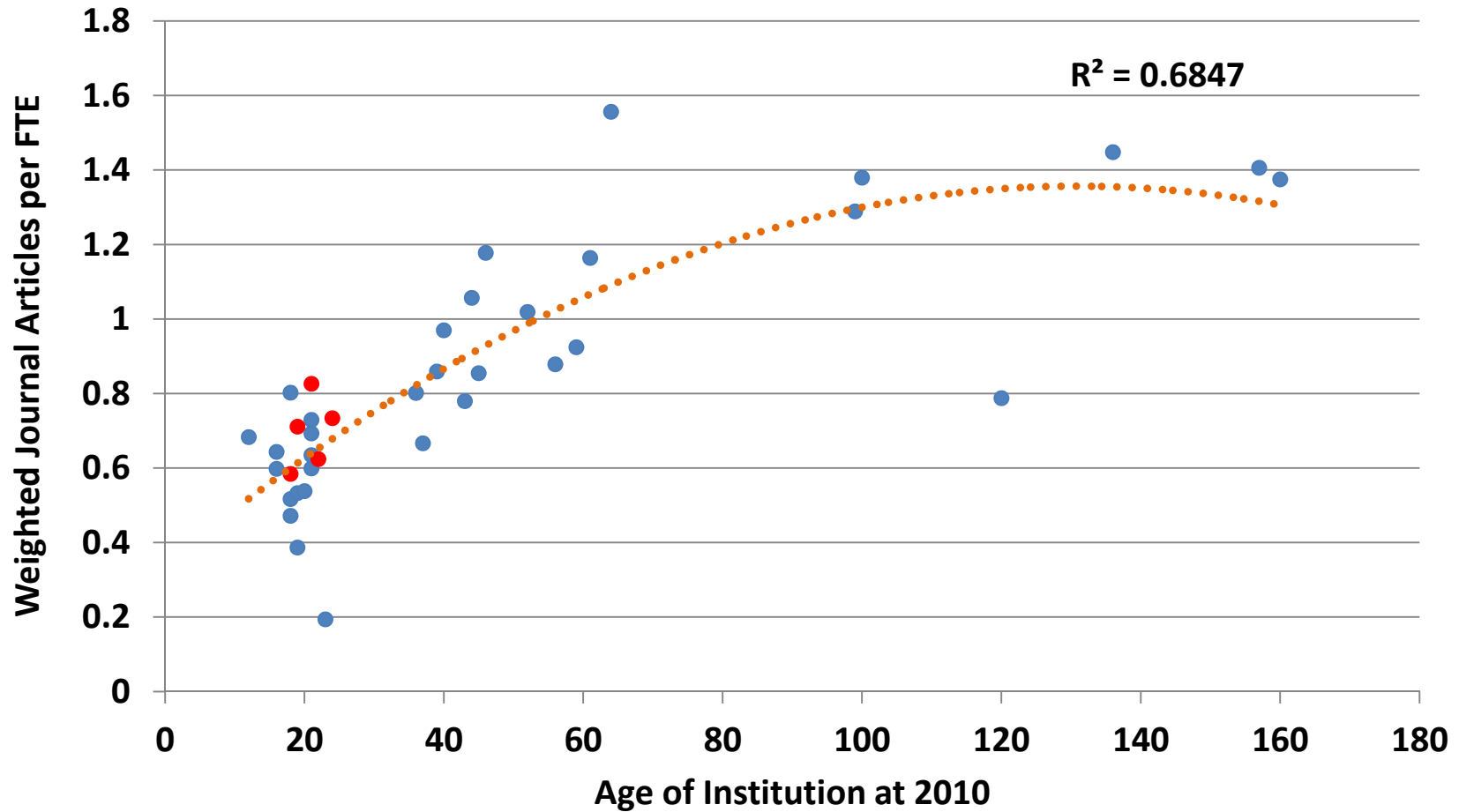


# Australian Universities Measure of Research Activity Total Weighted Publications/FTE (2008)



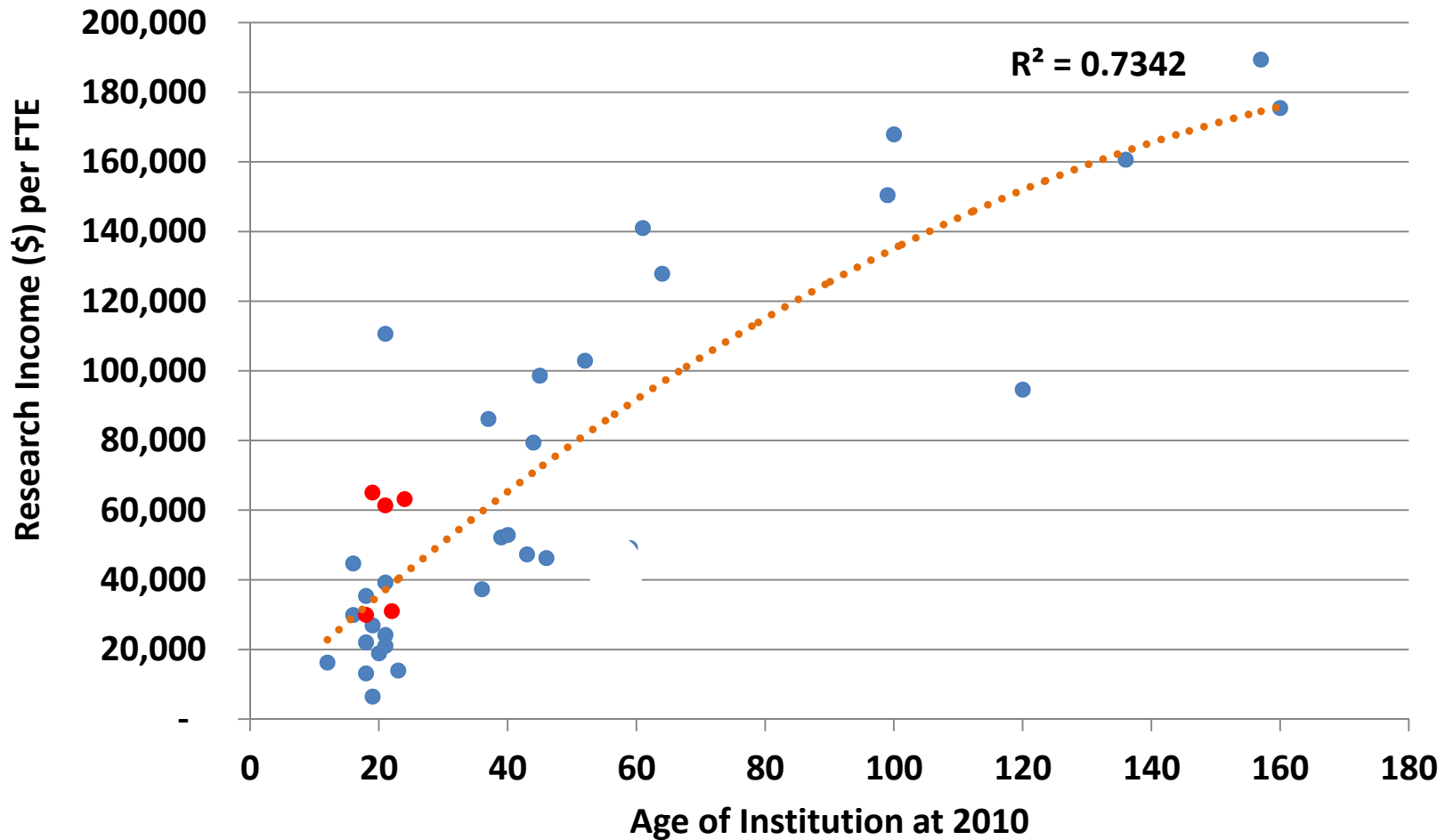


# Australian Universities Measure of Research Quality Journal Publications/FTE (2008)



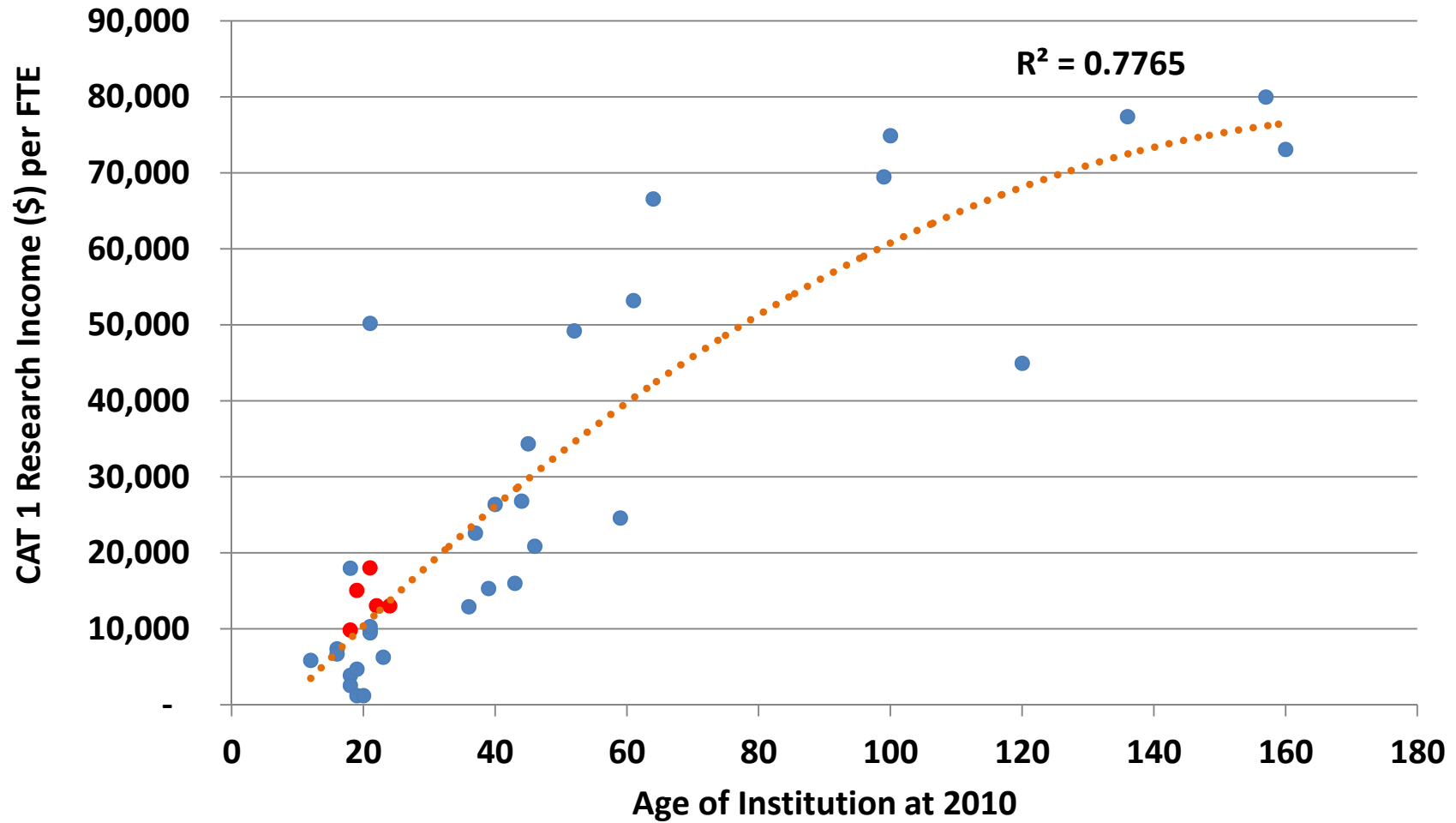


# Australian Universities Measure of Research Activity Total Research Income/FTE (2008)



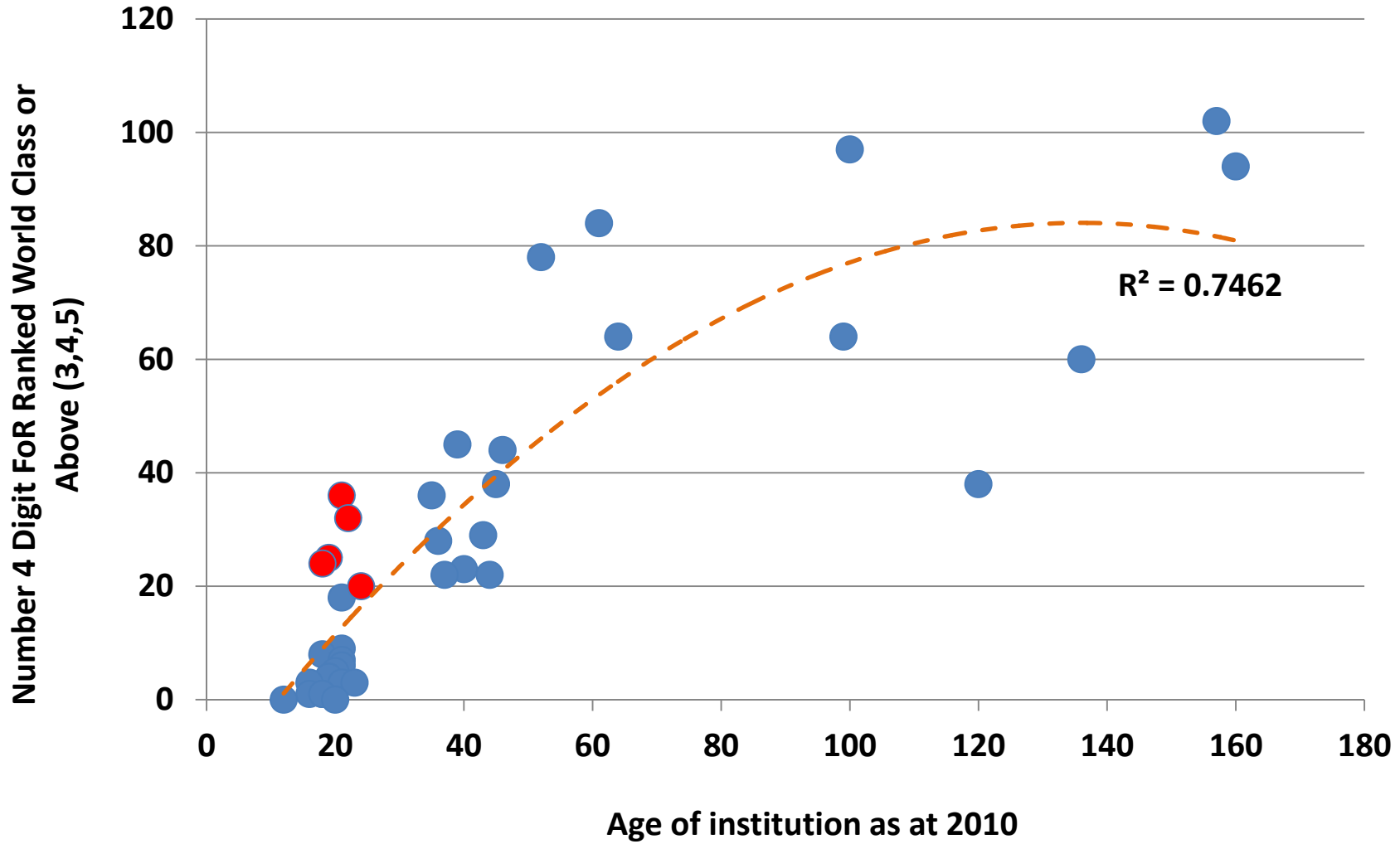


# Australian Universities Measure of Research Quality Competitive Research Income/FTE (2008)





# Number of Disciplinary Research Concentrations Ranked 'World Class' or above ( ERA3, 4, 5)





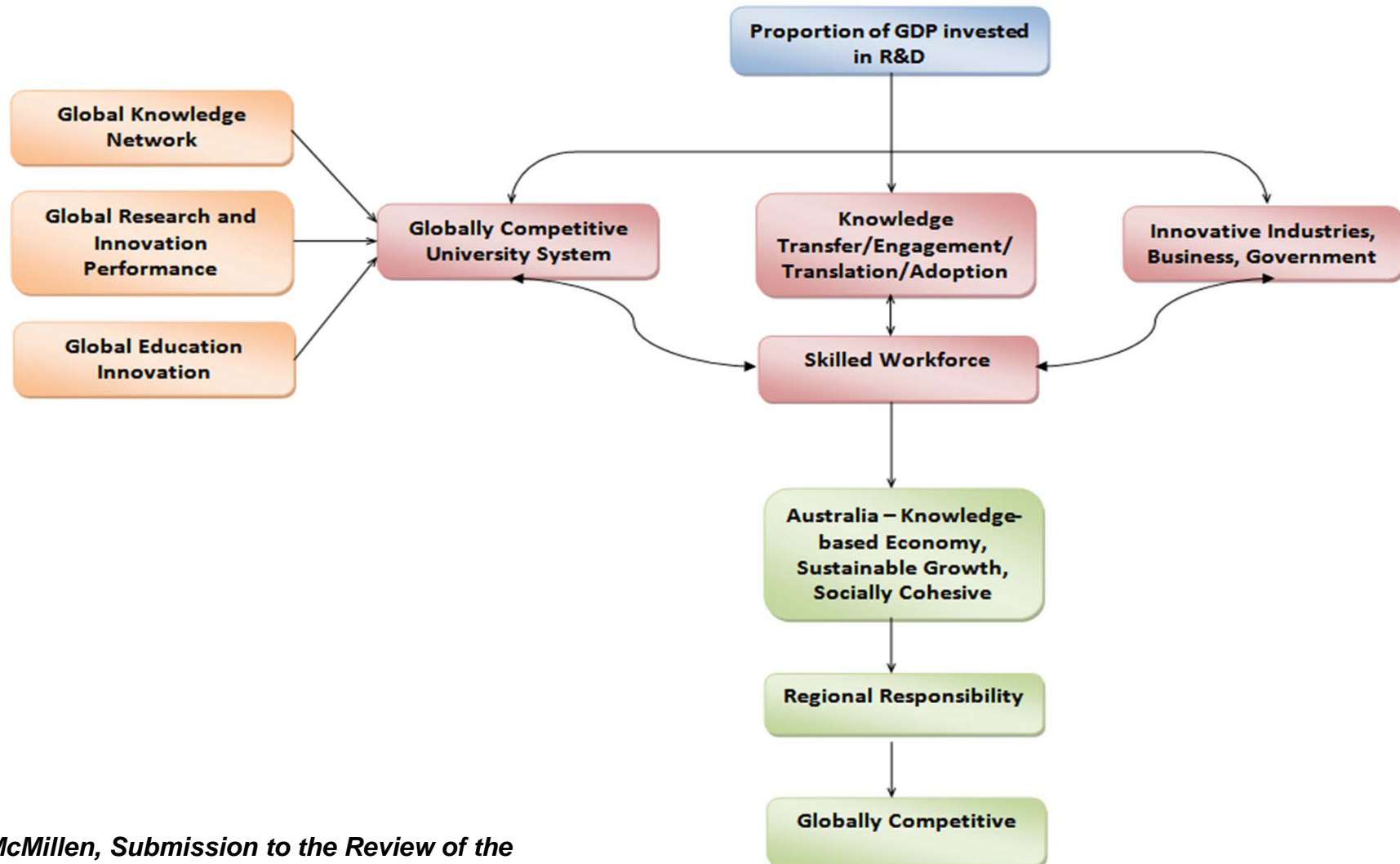
# A Ranking System for 'Future World Class Universities'?

## ➤ **The Way Forwards**

- **Identify cohorts of 'new' or 'younger' institutions within current world ranking systems and rank within cohort - but issues of interaction of age and reputation and weighting of research performance measures which reflect the destination not the journey.**
  
- **Consider new suite of research performance indicators that benchmark:**
  - **research 'activity'**
  - **research 'quality'**
  - **strengths in number of discipline areas****within appropriate cohorts i.e. the worlds early-mid career research institutions.**



# Context: Building a Globally Competitive University System





UniSA

