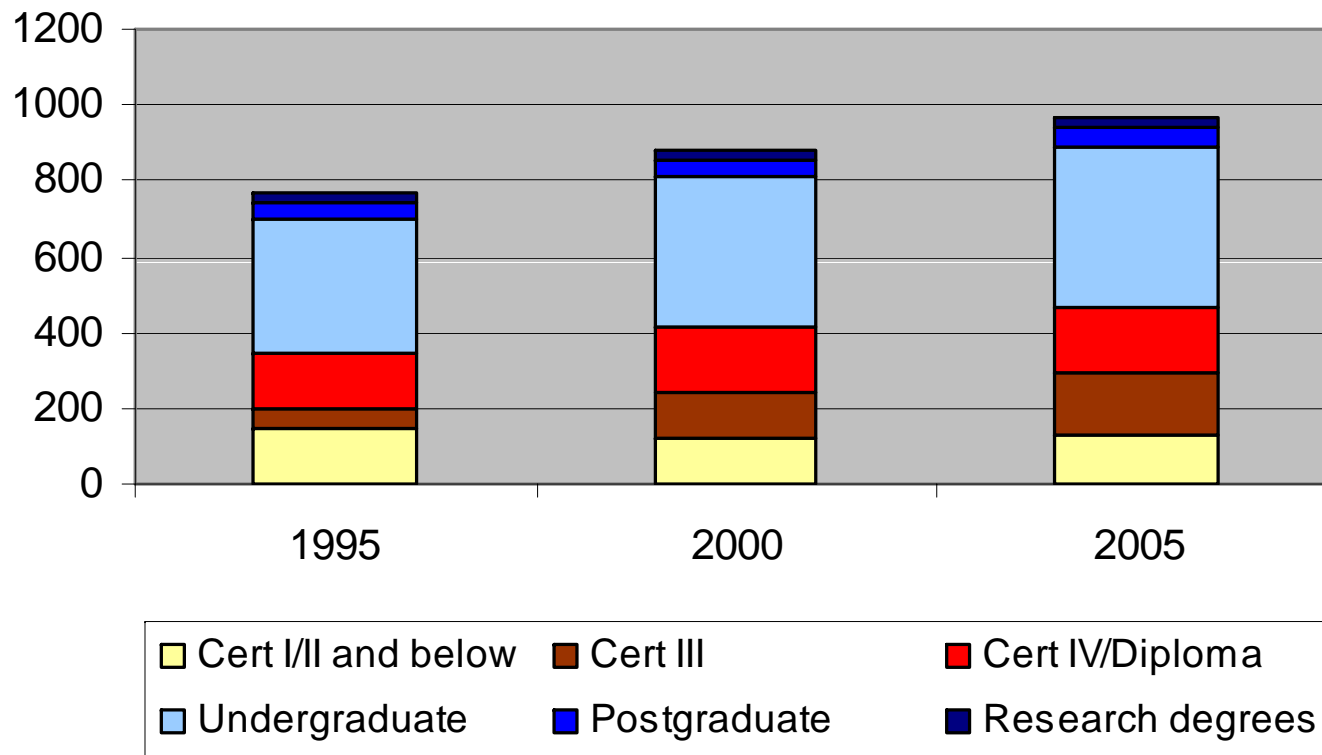


# Trends in enrolments

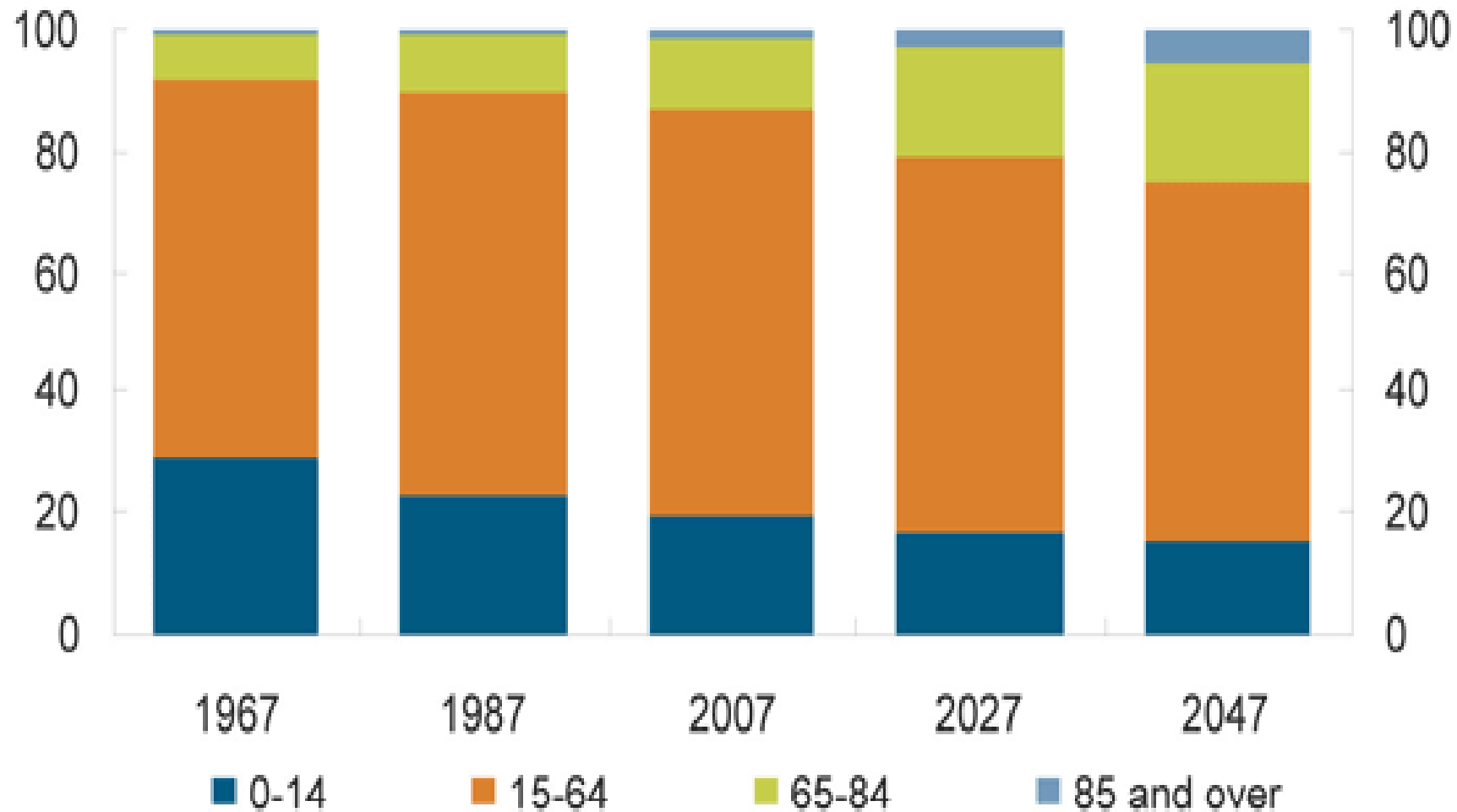
Julie Wells  
Director, Policy and Planning  
RMIT  
February 2008

# Domestic student load ('000), Australia, 1995–2005



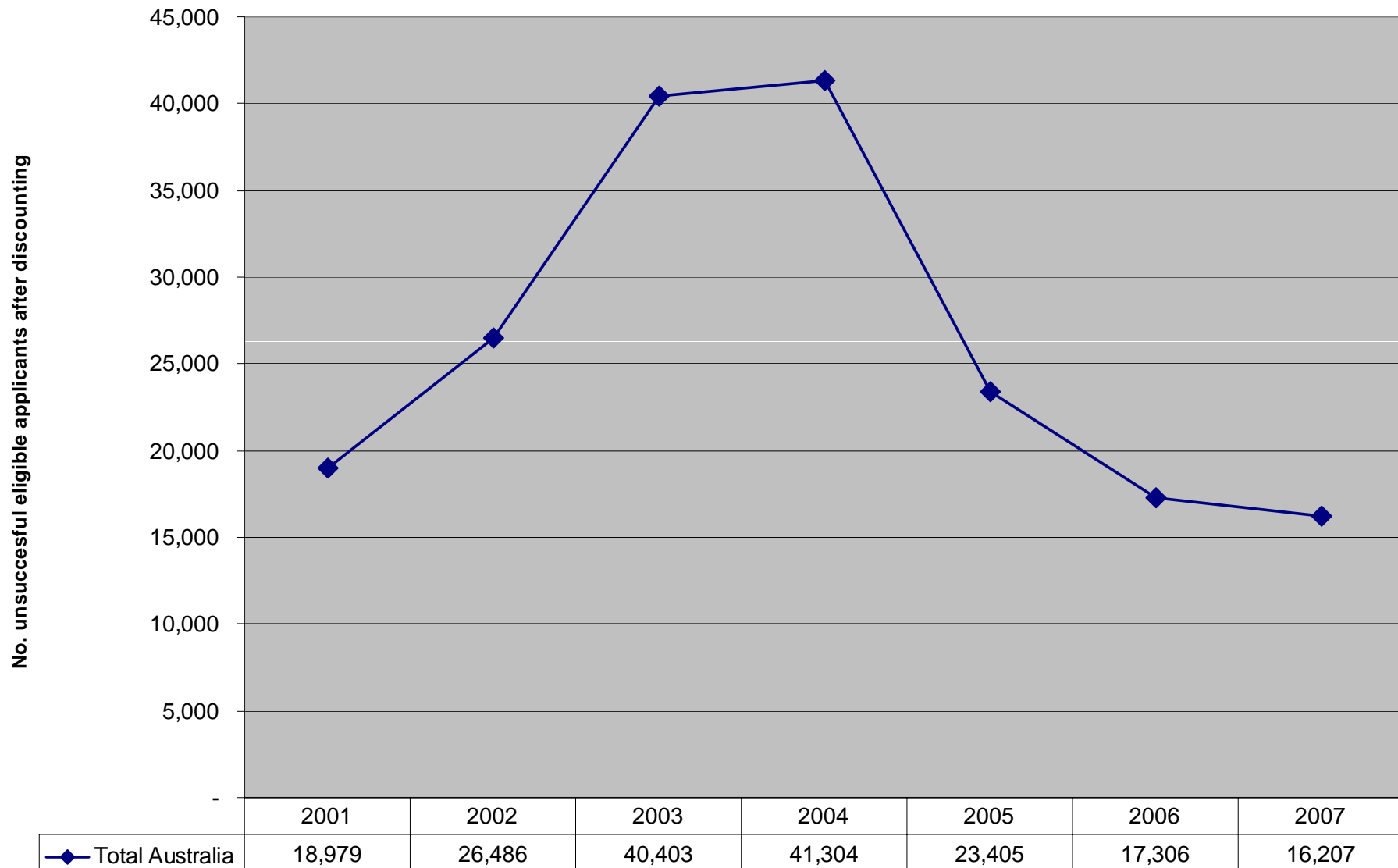
Source: *The Demand for Tertiary Education in Australia*, Tom Karmel, NCVET, 2007

## Proportions of total Australian population by age group - per cent



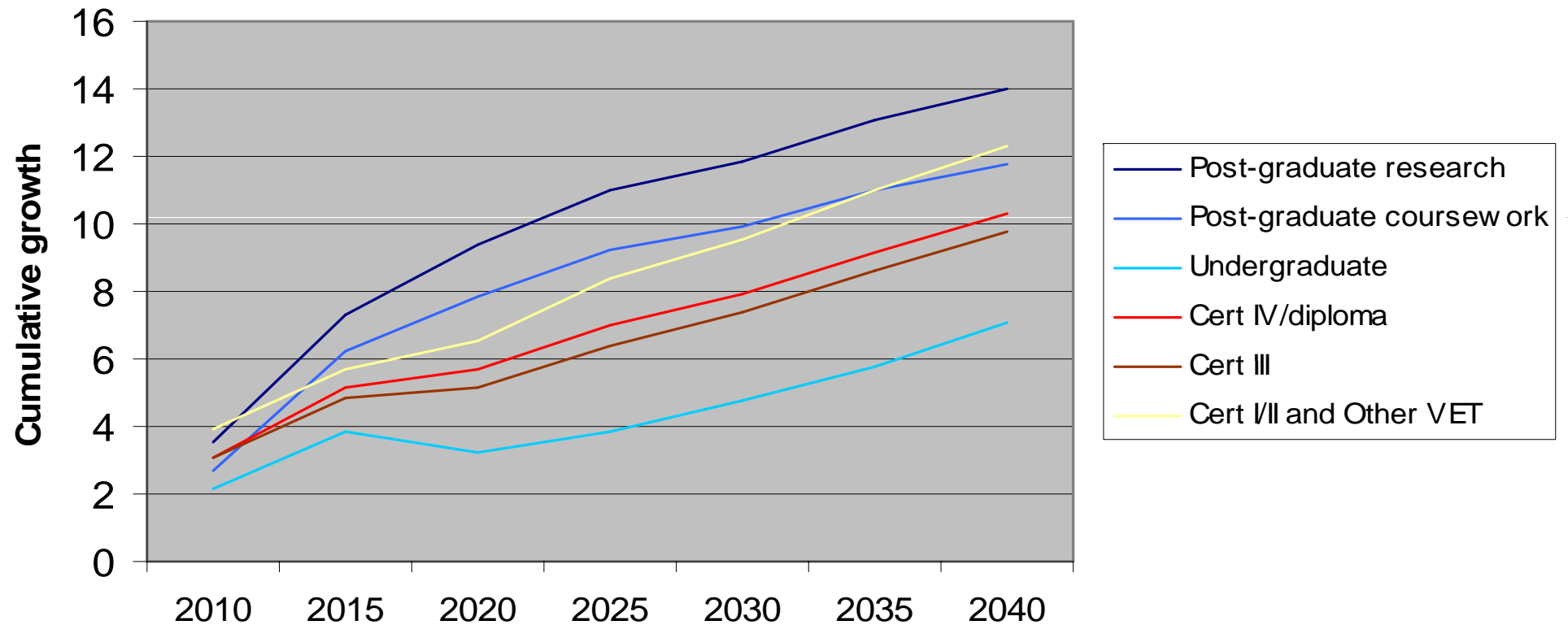
Source: Intergenerational Report 2007, Commonwealth Treasury

## Estimated umet demand - Total Australia - 2001 to 2007



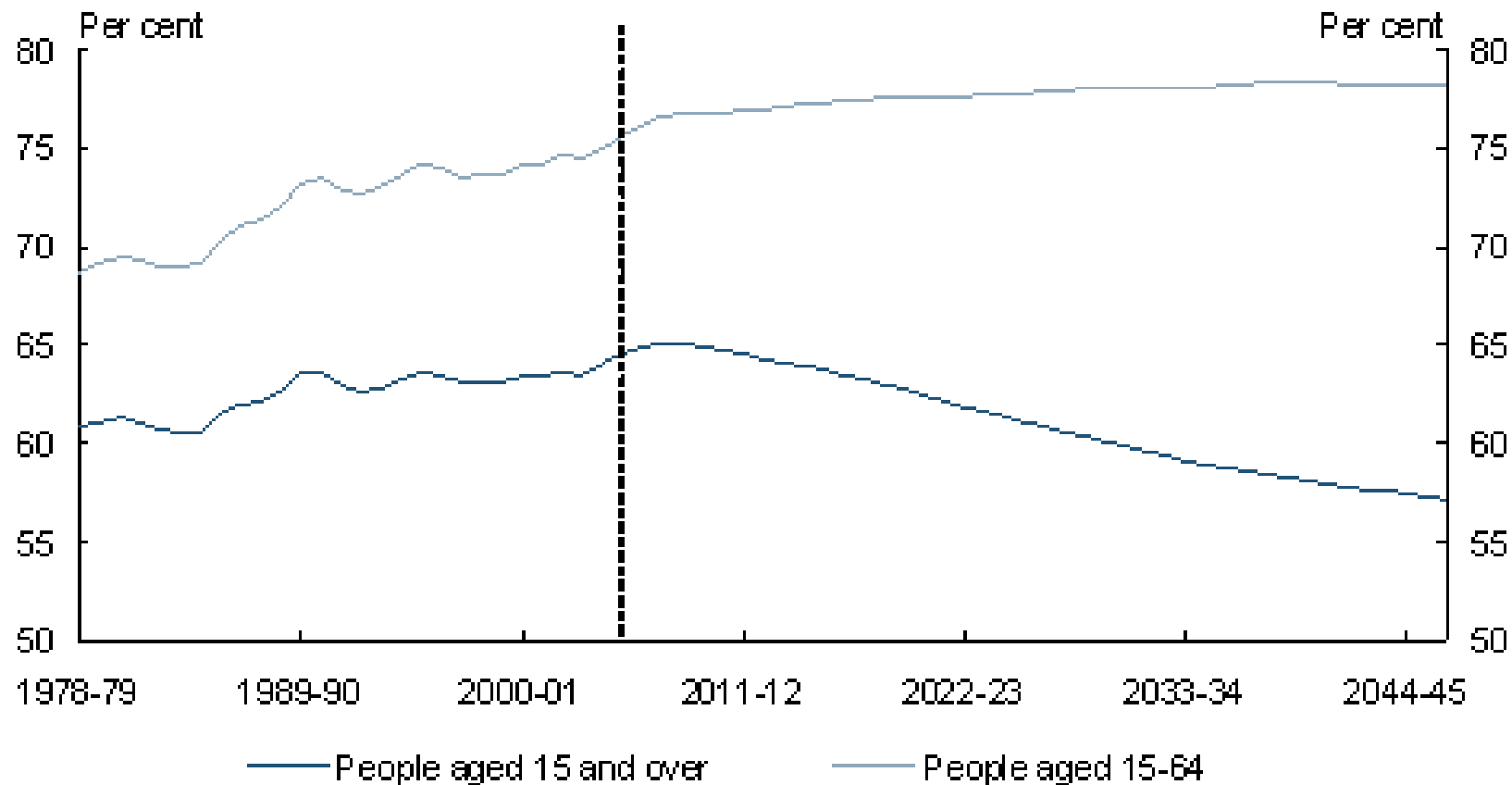
Source: Report on Applications for Undergraduate University Courses, April 2007, Universities Australia (previously AVCC)

# Cumulative growth in demand due to change in demographic factors



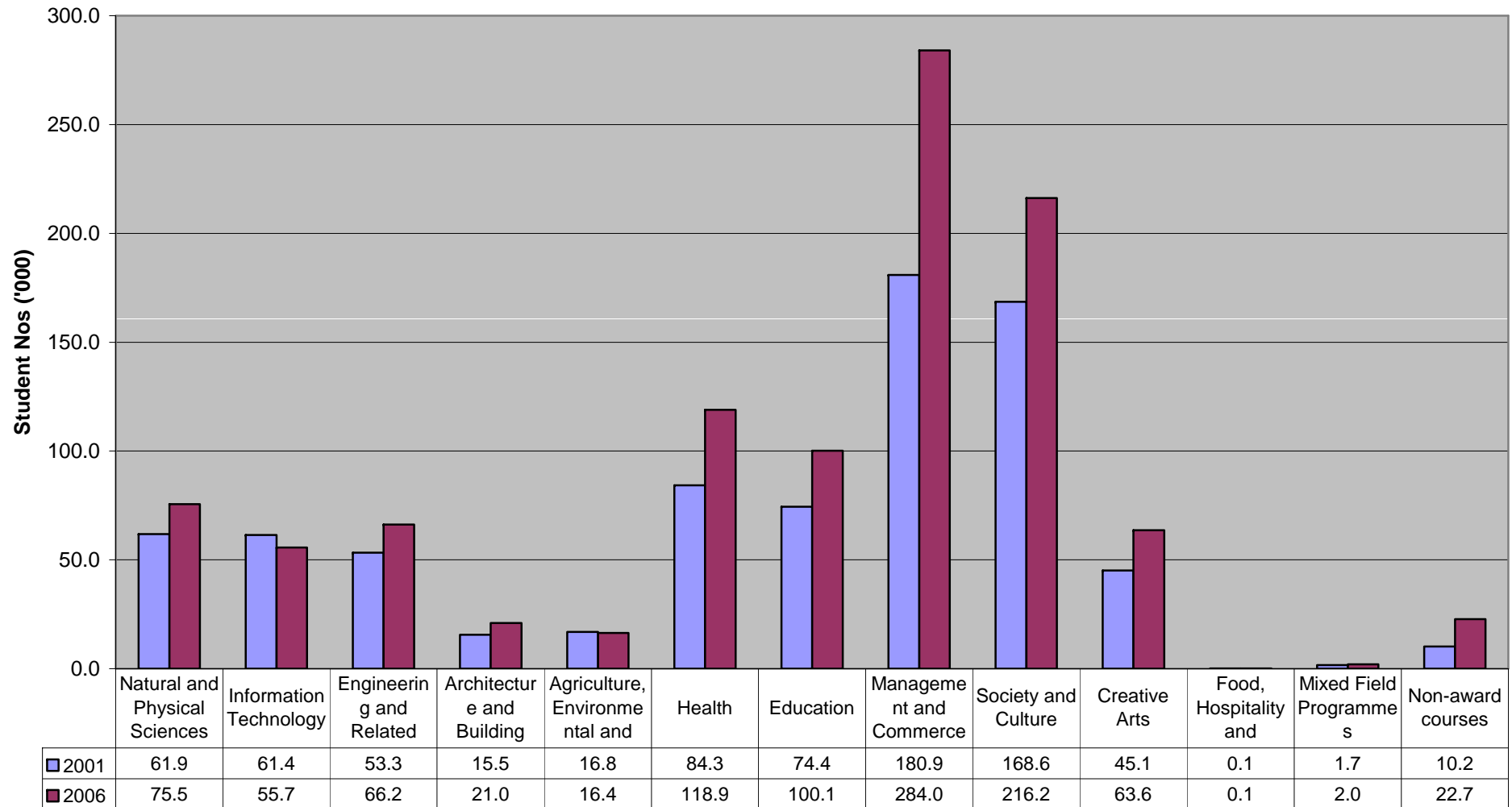
Source: *The Demand for Tertiary Education in Australia*, Tom Karmel, NCVER, 2007

# Australian historic and projected labour force participation rates



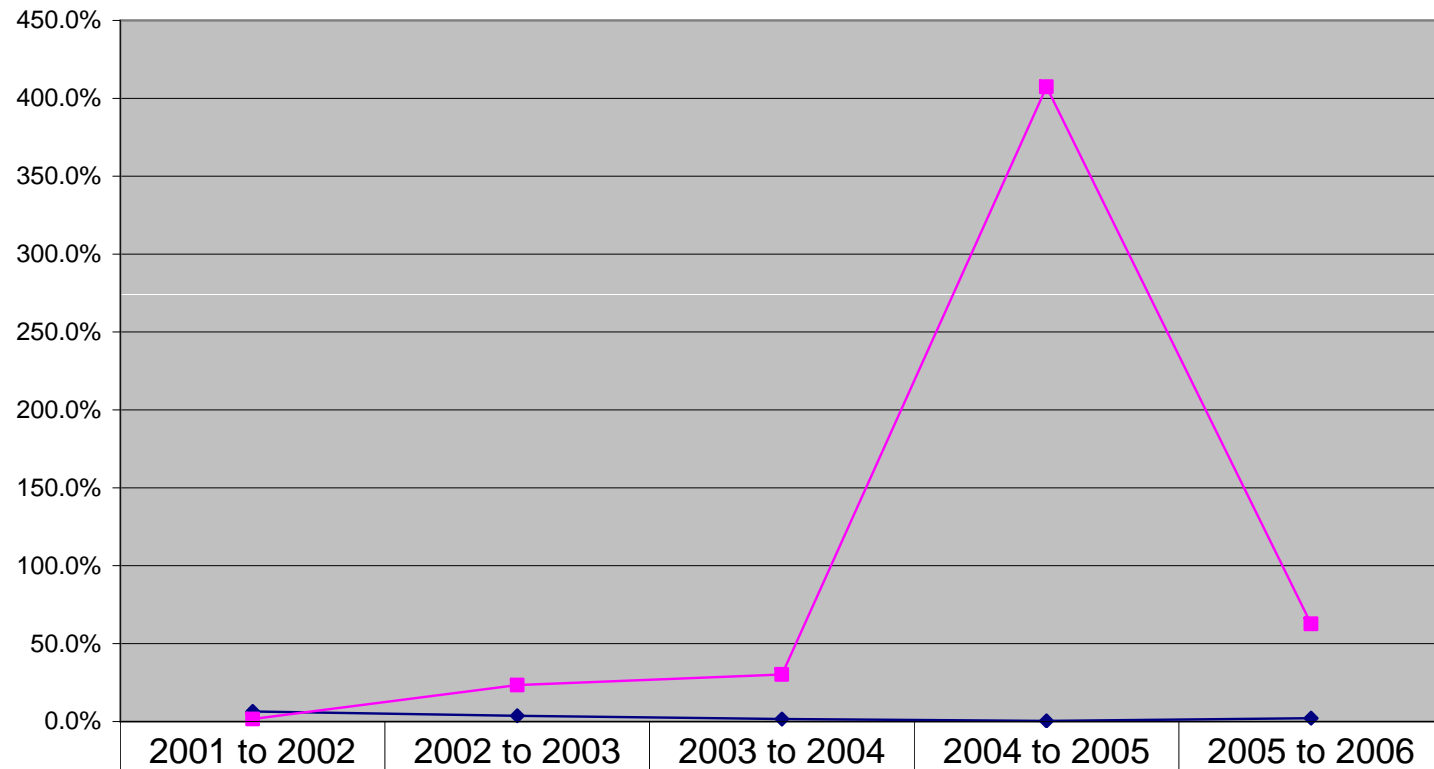
Source: *Workforce Participation Rates - How Does Australia Compare?* Productivity Commission, Dec 2006

## Higher Ed Student Nos by Broad Field of Education - 2001 to 2006



Source: DEST Higher Education Statistics Collections, 2001 and 2006

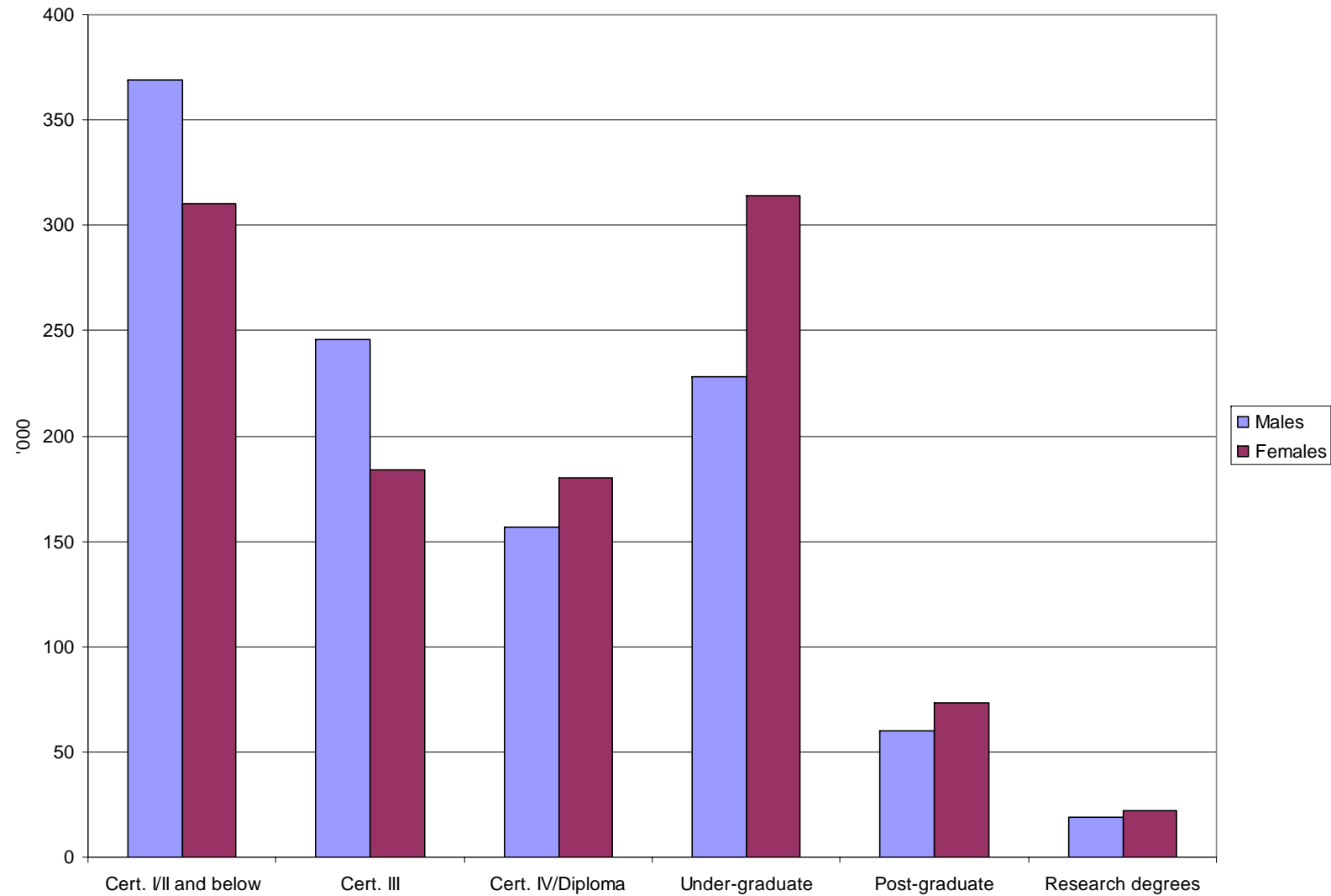
## % change on previous year student nos - Table A and B providers compared with Private Providers



◆ Table A and B Providers	6.5%	3.7%	1.6%	0.4%	2.2%
■ Private Providers	1.6%	23.3%	30.1%	407.5%	62.6%

Source: DEST Higher Education Statistics Collections, 2001 and 2006

## Domestic tertiary student numbers by sex, Australia, 2005

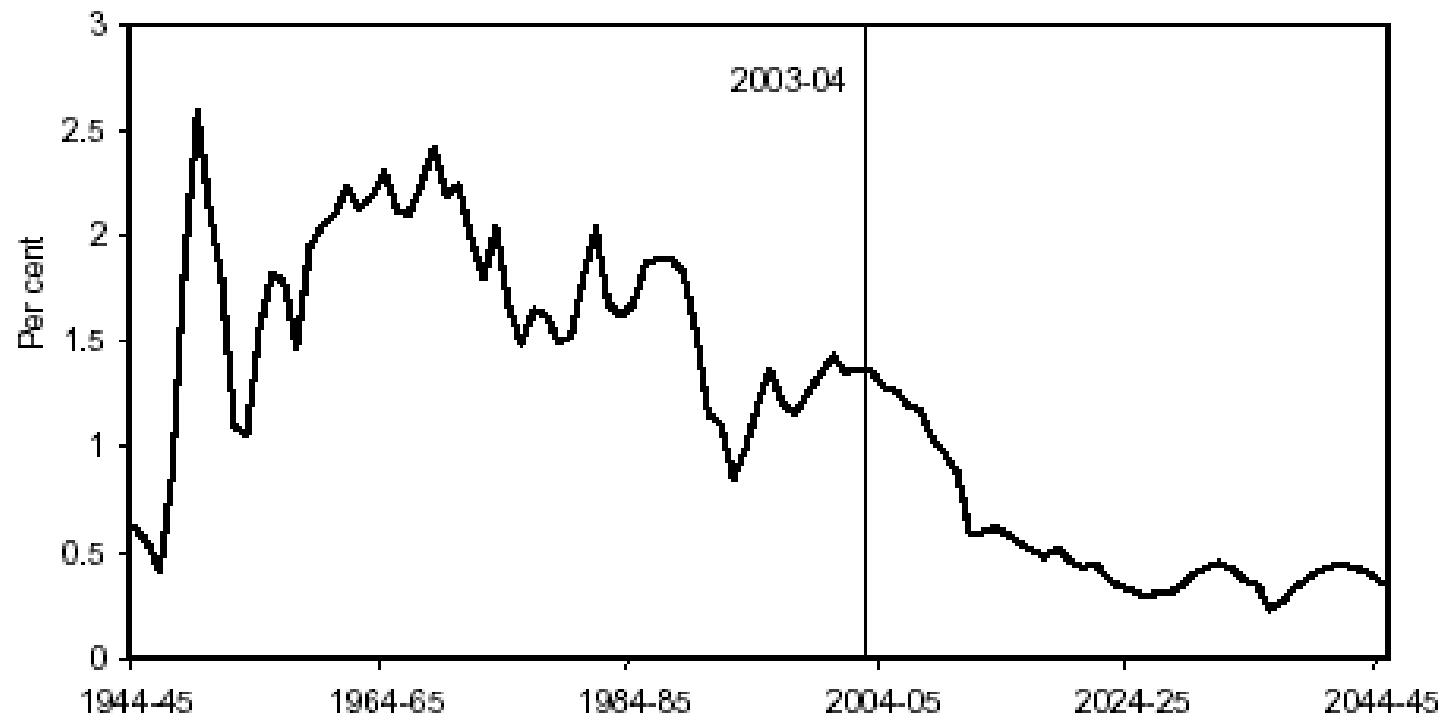


Source: *The Demand for Tertiary Education in Australia*, Tom Karmel, NCVER, 2007

# Impacts on labour supply

Figure 3.13 Growth in worker numbers is set to decline

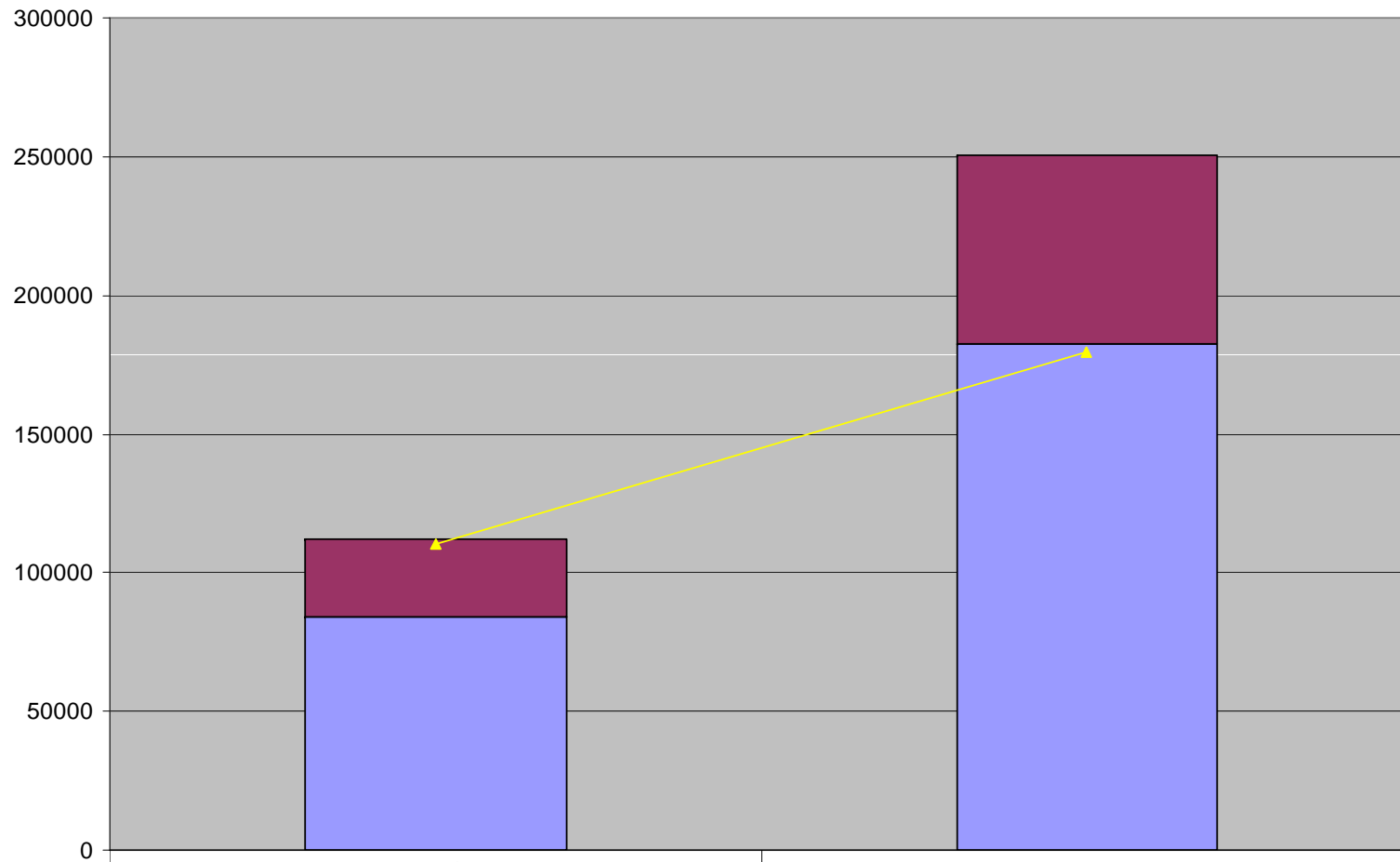
Yearly percentage change in the number of people aged 15-64, 1944-45 to 2044-45



Data sources: PC-M population projections and ABS historical population data for earlier years.

Source: Older Workers: Our Future Labour Force? Presentation by Louise Rolland to Skilling Australia's Mature Aged Workforce, 2007

## Overseas Student Nos compared with EFTSL - 2001 to 2006



	2001	2006
Offshore Student Nos	28066	68175
Onshore Student Nos	84276	182619
Total Overseas EFTSL	110064	179772